

From Awareness to Action:
 Driving Multidisciplinary Application of
 Screening and Disease Modifying Therapies in
EARLY STAGE T1D

DC General Metropolitan Area Local Resources

Name	Description	Contact
<p>TrialNet</p>	<p>Free Risk Screening: offers free T1D risk screening to individuals meeting specific criteria related to family history of Type 1 Diabetes (T1D) or prior positive autoantibody testing</p> <p>Screening Options: You can get screened via a home test kit, a blood draw at a Quest Diagnostics or LabCorp location, or by appointment at a TrialNet center</p> <p>Post-Screening Support: If your screening results are positive, TrialNet can help confirm the results and potentially suggest further testing. They can also connect you with experts for personalized advice and monitoring guidance</p>	<p>You can reach TrialNet by visiting</p> <p>https://www.trialnet.org/</p> <p>OR</p> <p>Call 1-800-425-8361</p>
<p>Children's National Hospital</p>	<p>Diabetes Program: Children's National Hospital has a dedicated diabetes program, which includes research and clinical trials focused on improving T1D management, quality of life, risk identification, and prevention.</p> <p>Research Opportunities: They are actively involved in research exploring various aspects of T1D, including behavioral interventions utilizing Continuous Glucose Monitoring (CGM) data</p> <p><i>*Also offers resources specifically for children & teens such as programs and support groups</i></p>	<p>For appointments and information, you can call</p> <p>1-888-884-BEAR (2327)</p> <p>OR</p> <p>202-476-3440.</p>



<p>Breakthrough T1D (formerly JDRF)</p>	<p>Clinical Trials: provides resources for finding and participating in T1D clinical trials in the Mid-Atlantic region</p> <p>Clinical Trial Connect Tool: Their online tool helps you identify suitable trials based on your location and other criteria.</p> <p><i>*Also offers programs and support groups for a variety of ages with T1D: Type 1 Parents Support (T1PS), T1D Teen Connections Group, Young Adult Advocacy Council (YAAC), and events</i></p>	<p>You can contact their Mid-Atlantic Chapter at midatlantic@BreakthroughT1D.org</p> <p>OR</p> <p>Call 202-371-0044</p>
--	--	--

Specific to DC

<p>Howard University Hospital</p>	<p>Their Diabetes Treatment Center offers comprehensive services and is recognized by the American Diabetes Association for its diabetes self-management education and support classes.</p>	<p>They can be reached at 202-865-3350</p>
<p>Diabetes Clinical Trials (General)</p>	<p>Websites like policylab.us list active clinical trials in the District of Columbia and the surrounding area for various diabetes research studies.</p>	<p>You can visit this website https://policylab.us/</p>
<p>DC Department of Health</p>	<p>Their Diabetes Prevention and Control Program aims to reduce the burden of diabetes through various partnerships and programs.</p>	<p>You can contact them at (202) 442-9130</p>



From Awareness to Action:
 Driving Multidisciplinary Application of
 Screening and Disease Modifying Therapies in
EARLY STAGE T1D

Inova Fair Oaks Diabetes Center	Offers a Type 1-derful Pediatric Support Group for kids and teens, with a corresponding Facebook group.	https://www.inova.org/our-services/inova-diabetes-services
Chris Dudley Foundation	Provides resources and camps specifically for children and teens with T1D, including the Chris Dudley Basketball Camp.	https://www.chrisdudley.org/
The Diabetes Link	Focuses on resources and events for college-age students and young adults with T1D.	https://thediabeteslink.org/
T1D Exchange	Provides an online platform for young adults with T1D to connect and share experiences.	https://t1dexchange.org/how-to-meet-people-diabetes/
Connect1D	A non-profit organization that builds communities and creates relationships for people living with T1D. They offer programs for patients of all ages and caregivers of patients with T1D.	https://connect1d.org/

Specific to Maryland

University of Maryland Center for Diabetes and	The UMCDE offers a comprehensive approach to diabetes care, including screening, prevention, and treatment.	Call 443-682-6800
---	---	-------------------



From Awareness to Action:
 Driving Multidisciplinary Application of
 Screening and Disease Modifying Therapies in
EARLY STAGE T1D

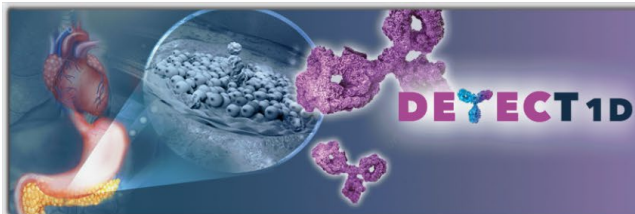
<p>Endocrinology (UMCDE)</p>	<p><u>Services:</u> Includes screenings, prevention programs, and treatment plans for type 1, type 2, and gestational diabetes, according to the University of Maryland Medical System.</p>	
<p>Johns Hopkins Pediatric Diabetes Center</p>	<p>This center offers a program specifically for children at risk of developing type 1 diabetes.</p> <p><u>Services:</u> Offers screening and care tailored to at-risk children and families, according to Johns Hopkins Medicine.</p>	<p>Call 443-997-5437</p>
<p>Adventist HealthCare</p>	<p>Provides pediatric endocrinology services, including diabetes care and screening.</p> <p><u>Services:</u> Offers compassionate care for endocrine conditions, including diabetes.</p>	<p>Call 800-642-0101</p>
<p>LifeBridge Health</p>	<p>Includes the Diabetes Resource Center at Sinai Hospital and a diabetes support group at Carroll Hospital.</p>	<p>https://www.lifebridgehealth.org/services/diabetes-care</p>
<p>Mt. Washington Pediatric Hospital</p>	<p>Offers comprehensive evaluations and treatment of endocrine disorders and diabetes in children and adolescents.</p>	<p>https://www.mwph.org/health-services/endocrinology/diabetes</p>
<p>Baltimore Medical System</p>	<p>Offers the Diabetes Education and Lifestyle (DEAL) program, including the Diabetes Prevention Program and Diabetes Management Program.</p>	<p>https://bmsi.org/our-programs/diabetes-education-and-lifestyle-program/</p>



University of Maryland Medical System	UPMC Western Maryland, UM Capital Region Health, UM Shore Regional Health, and UM Baltimore Washington Medical Center.	Diabetes Treatment Baltimore, Maryland UMMC Midtown Campus
American Diabetes Association (ADA) Maryland Chapter	Focused on educating the public about diabetes, preventing new cases, and supporting those living with the disease.	https://diabetes.org/local/maryland
Eastern Shore T1 Diabetic Support Foundation (EST1DSF)	This non-medical support group focuses on families and caregivers of children with T1D, offering summer camp programs and scholarships.	https://est1d.org/
Lions Club	Many local Lions Clubs contribute to diabetes awareness and support, including sponsoring children with diabetes to attend camps <i>Camp Merrick</i> - Offers a week of camp for children with diabetes, allowing them to experience summer camp while also managing their condition.	https://lionscammerrick.org/camps/
Camp Destiny	Another summer camp for children with diabetes supported by organizations like the Bel Air Lions Club.	https://www.belairlions.org/diabetes-awareness-services/
Additional Support Groups	Support groups online and throughout Maryland.	https://www.breakthrough1d.org/midatlantic/2019/06/05/398/

Specific to Virginia

UVA Health Children's	Offers specialized diabetes care and advanced treatments for children, including those with T1D.	https://childrens.uvahealth.com/services/pediatric-diabetes-endocrinology https://uvahealth.com/services/diabetes-care
------------------------------	--	--



From Awareness to Action:
 Driving Multidisciplinary Application of
 Screening and Disease Modifying Therapies in
EARLY STAGE T1D

<p>Children's Hospital of The King's Daughters (CHKD)</p>	<p>Provides a diabetes program with contact information and locations in Norfolk, Virginia Beach, Newport News, and Chesapeake.</p>	<p>https://www.chkd.org/our-care/programs-clinics-and-centers/diabetes-program/</p>
<p>Roanoke Family Support Group</p>	<p>A casual gathering of families with children with T1D for information exchange and support</p>	<p>https://www.breakthrough1d.org/midatlantic/2017/01/10/roanoke-family-support-group/</p>
<p>Inova Fairfax Hospital (Falls Church)</p>	<p>A support group designed for parents of kids & teens with diabetes to connect and support each other.</p>	<p>https://www.inova.org/locations/inova-fairfax-medical-campus</p>
<p>T1DE (Lynchburg)</p>	<p>Hosts a support group open to individuals and families living with T1D and pediatric Type 2 diabetes. They meet monthly for formal and informal discussions, educational presentations, and networking.</p>	<p>https://www.t1de.org/</p>
<p>Carilion Children's at Tanglewood Mall (Roanoke)</p>	<p>This support group is open to anyone living with or affected by T1D, with youth activities and childcare provided.</p>	<p>https://www.carilionclinic.org/locations/carilion-childrens-pediatric-medicine-tanglewood</p>