

Leveraging Novel Treatment Options for **SMALL-CELL LUNG CANCER** in the Second Line



This activity is provided by Med Learning Group.

This activity is co-provided by Ultimate Medical Academy/Complete Conference Management (CCM).

This activity is supported by an educational grant from Jazz Pharmaceuticals, Inc.



Leveraging Novel Treatment Options for SMALL-CELL LUNG CANCER in the Second Line

AGENDA

I. Response to Primary Therapy and Tumorigenesis of Small Cell Lung Cancer: Subsequent Lines of Therapy and Pathophysiology Primer

- a. Time from initial therapy to relapse - determining subsequent therapy
- b. Dose attenuation in the second-line: an appropriate option?
- c. Tumorigenesis

II. Efficacy and Safety Review: Second-Line Regimens for Extensive Stage SCLC

- a. Clinical trials findings
 - i. Topotecan – efficacy, safety, and tolerability
 - ii. Lurbinectedin – efficacy, safety, and tolerability
 - iii. Patient population – comorbidities
- b. Clinical trials findings – developing compounds in the second-line
 - i. Anlotinib
 - ii. Veliparib

III. Applying National Cancer Center Network (NCCN) Guidelines to Practice

- a. Second-line regimens in patients with extensive disease
 - i. Preferred regimens with relapse \leq 6 months
 - a. Topotecan
 - b. Lurbinectedin
 - ii. Clinical trials data – efficacy and safety in the second-line
- b. Current recommendations for relapse $>$ 6 months
 - i. Original regimen
 - ii. Lurbinectedin – efficacy, safety, and tolerability
- c. Patient management in the population that has progressed

IV. Conclusions

V. Questions and Answers

Leveraging Novel Treatment Options for Small-Cell Lung Cancer in the Second Line

FACULTY

Julia Rotow, MD
Thoracic Oncologist
Lowe Center for Thoracic Oncology
Dana-Farber Cancer Institute
Boston, MA

PROGRAM OVERVIEW

This live virtual TeleECHO program will explore the management of small cell lung cancer (SCLC) in the second-line setting. A brief didactic presentation will discuss treatment options after relapse of SCLC and clinical trial data of the efficacy and safety of second-line treatment regimens. Interactive case studies will illustrate the application of guideline recommendations for treatments approved for managing extensive-stage SCLC.

TARGET AUDIENCE

This activity is intended for community-based oncologists, pulmonologists, oncology nurses, nurse practitioners and other healthcare professionals who treat patients with small cell lung cancer.

LEARNING OBJECTIVES

Upon the completion of this program, attendees should be able to:

- Review the efficacy and safety data of systemic regimens in the second-line treatment of patients with extensive-stage SCLC
- Discuss the clinical trial data supporting the NCCN guidelines in the second-line treatment of patients with extensive-stage SCLC
- Describe how to apply the second-line efficacy and safety data to the management of small-cell lung cancer in the patient care setting

ACCREDITATION STATEMENT

Med Learning Group is accredited by the Accreditation Council for Continuing Medical Education to provide continuing medical education for physicians. This CME activity was planned and produced in accordance with the ACCME Essentials.

CREDIT DESIGNATION STATEMENT

Med Learning Group designates this activity for a maximum of 1.0 AMA Category 1 Credit™. Physicians should claim only the credit commensurate with the extent of their participation in the activity.

NURSING CREDIT INFORMATION

Purpose: This program would be beneficial for nurses involved in the management of patients with SCLC in the second-line setting. CNE Credits: 1.0 ANCC Contact Hour.

CNE Accreditation Statement: Ultimate Medical Academy/CCM is accredited as a provider of continuing nursing education by the American Nurses Credentialing Center's Commission on Accreditation.

Awarded 1.0 contact hour of continuing nursing education of RNs and APNs.

ABIM Maintenance of Certification

Successful completion of this CME activity, which includes participation in the evaluation component, enables the participant to earn up to 1.0 Medical Knowledge MOC point in the American Board of Internal Medicine's (ABIM) Maintenance of Certification (MOC) program. It is the CME activity provider's responsibility to submit participant completion information to ACCME for the purpose of granting ABIM MOC credit.

DISCLOSURE POLICY STATEMENT

In accordance with the Accreditation Council for Continuing Medical Education (ACCME) Standards for Commercial Support, educational programs sponsored by Med Learning Group must demonstrate balance, independence, objectivity, and scientific rigor. All faculty, authors, editors, staff, and planning committee members participating in an MLG-sponsored activity are required to disclose any relevant financial interest or other relationship with the manufacturer(s) of any commercial product(s) and/or provider(s) of commercial services that are discussed in an educational activity.

DISCLOSURE OF CONFLICTS OF INTEREST

Julia Rotow, MD reports that she has received consulting fees from AstraZeneca, AbbVie, Gritstone, Lilly, and has received honoraria from Jazz, Johnson and Johnson, Merck, Pfizer, and Regeneron.

CME Content Review

The content of this activity was independently peer reviewed.

The reviewer of this activity has nothing to disclose.

CNE Content Review

The content of this activity was peer reviewed by a nurse reviewer.

Douglas Cox, MSN, MHA, RN
Ultimate Medical Academy/CCM – Lead Nurse Planner

The reviewer of this activity has nothing to disclose

Staff Planners and Managers

The staff, planners, and managers reported the following financial relationships or relationships to products or devices they or their spouse/life partner have with commercial interests related to the content of this CME/CE activity:

Matthew Frese, MBA, General Manager of Med Learning Group, has nothing to disclose.

Christina Gallo, SVP, Educational Development for Med Learning Group, has nothing to disclose.

Douglas Cox, MSN, MHA, RN, UMA/CCM – LNP, has nothing to disclose.

Angela Davis, Medical Director for Med Learning Group, has nothing to disclose.

Lauren Welch, MA, VP, Accreditation and Outcomes for Med Learning Group, has nothing to disclose.

Daniel Dasilva, Accreditation and Outcomes Coordinator for Med Learning Group, has nothing to disclose.

Ashley Whitehurst, Program Manager for Med Learning Group, has nothing to disclose.

Natalie Smith, Program Coordinator for Med Learning Group, has nothing to disclose.

DISCLOSURE OF UNLABELED USE

Med Learning Group requires that faculty participating in any CME activity disclose to the audience when discussing any unlabeled or investigational use of any commercial product or device not yet approved for use in the United States.

During this lecture, the faculty may mention the use of medications for both FDA-approved and non-approved indications.

METHOD OF PARTICIPATION

There are no fees for participating and receiving CME credit for this activity. To receive credit participants must:

1. Read the CME/CNE information and faculty disclosures.
2. Participate in the activity.
3. Complete pre-and-post surveys and evaluation.

You will receive your certificate as a downloadable file.

DISCLAIMER

Med Learning Group makes every effort to develop CME activities that are science based.

This activity is designed for educational purposes. Participants have a responsibility to use this information to enhance their professional development in an effort to improve patient outcomes. Conclusions drawn by the participants should be derived from careful consideration of all available scientific information. The participant should use his/her clinical judgment, knowledge, experience, and diagnostic decision making before applying any information, whether provided here or by others, for any professional use.

For CME questions, please contact Med Learning Group at info@medlearninggroup.com. Contact this CME provider at Med Learning Group for privacy and confidentiality policy statement information at <http://medlearninggroup.com/privacy-policy/>

AMERICANS WITH DISABILITIES ACT

Staff will be glad to assist you with any special needs. Please contact Med Learning Group prior to participating at

info@medlearninggroup.com



This activity is provided by Med Learning Group



This activity is co-provided by Ultimate Medical Academy/Complete Conference Management (CCM).

This activity is supported by an educational grant from Jazz Pharmaceuticals, Inc.

Copyright © 2021 Med Learning Group. All rights reserved. These materials may be used for personal use only. Any rebroadcast, distribution, or reuse of this presentation or any part of it in any form for other than personal use without the express written permission of Med Learning Group is prohibited.

Leveraging Novel Treatment Options for Small-Cell Lung Cancer in the Second Line

Julia Rotow, MD
Medical Oncologist
Lowe Center for Thoracic Oncology
Dana-Farber Cancer Institute
Boston, MA

1

Disclosures

- **Julia Rotow, MD** reports that she has received consulting fees from AstraZeneca, AbbVie, Gritstone, Lilly, and has received honoraria from Jazz, Johnson and Johnson, Merck, Pfizer, and Regeneron.
- During this lecture, the faculty may mention the use of medications for both FDA-approved and non-approved indications.

This activity is supported by an educational grant from Jazz Pharmaceuticals, Inc.

2

Learning Objectives

- Discuss biological insights that drive the tumorigenesis of small-cell lung cancer (SCLC)
- Describe the clinical trial findings of combination regimens in the second-line treatment of patients with extensive-stage SCLC
- Apply National Comprehensive Cancer Network (NCCN) clinical practice guidelines in the second-line management of patients with extensive-stage SCLC

3

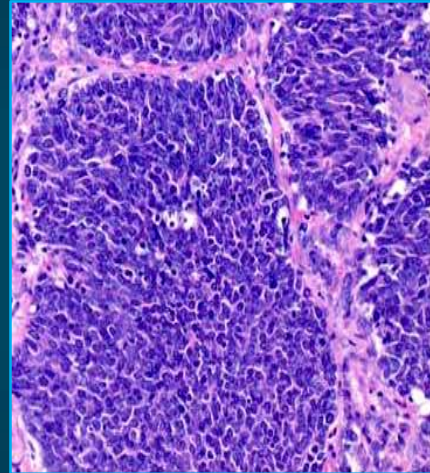
Response to Primary Therapy and Tumorigenesis of Small-Cell lung Cancer

Subsequent Lines of Therapy and Pathophysiology Primer

4

Small-Cell Lung Cancer Diagnosis

- Standard immunohistochemical markers for lung/neuroendocrine tumors
 - Majority express TTF-1
 - ~75% express neuroendocrine differentiation
 - Synaptophysin, chromogranin, and CD56
- SCLC has a high mitotic rate as a transcriptionally active cancer



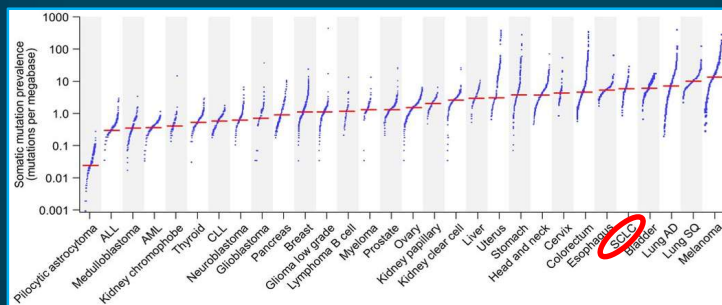
SCLC = small-cell lung cancer; TTF-1 = thyroid transcription factor 1.

George J, et al. *Nature*. 2015;524:47-53. Misch D, et al. *Diagn Pathol*. 2015;10:21. Karachaliou N, et al. *Transl Lung Cancer Res*. 2016;5:2-15.

5

Common Genomic Alterations in Small-Cell Lung Cancer

- Vast majority of individuals with SCLC have a significant smoking history and are without any targeted-therapy options despite having a significant mutational burden
- SCLC is extremely rare in individuals without a smoking history. In a never smoker, molecular profiling may help clarify the diagnosis and demonstrate a target

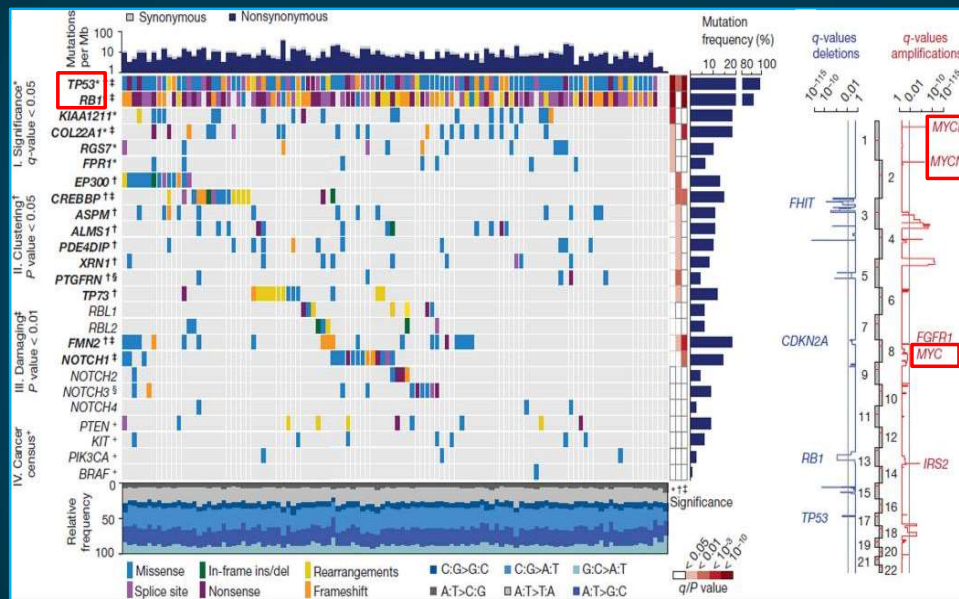


Pesch B, Kendzia B, Gustavsson P, Jockel KH, Johnen G, et al. Cigarette smoking and lung cancer--relative risk estimates for the major histological types from a pooled analysis of case-control studies. *Int J Cancer*. 2012 Sep 1. 131(5):1210-9.

Sabari JK, et al. *Nat Rev Clin Oncol*. 2017;14:549-561. Büttner R, et al. *ESMO Open*. 2019;4:e000442. Pesch B, et al. *Int J Cancer*. 2012;131:1210-1219.

6

Genomic Alterations in SCLC



George J, et al. *Nature*. 2015;524:47-53.

7

Common Genomic Alterations in Small-Cell Lung Cancer

P53—"Guardian of the Genome"

- Activates DNA-repair proteins
- Arrests the cell cycle at G1/S to allow for DNA repair
- Can initiate apoptosis in cell with significant DNA damage
- Mutation impacts cellular response to DNA damage
- Mutations present in the majority of SCLCs

P53 = tumor protein P53 (tumor suppressor); DNA = deoxyribonucleic acid; G1 = gap 1 phase; S = synthesis phase.

Sen T, et al. *Transl Lung Cancer Res*. 2018;7:50-68. Sabari JK, et al. *Nat Rev Clin Oncol*. 2017;14:549-561.

8

Common Genomic Alterations in Small-Cell Lung Cancer (continued)

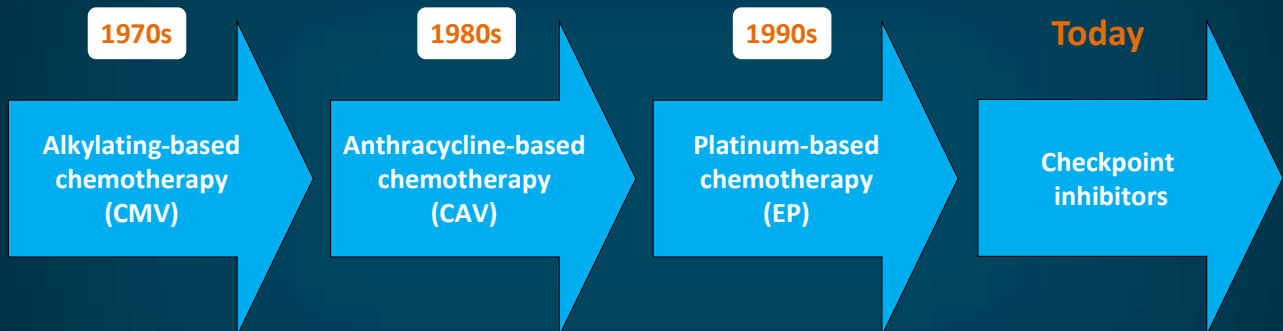
- RB1—Inhibits cell-cycle progression by binding transcription factors in cells with damaged DNA, arresting replication in S-phase
 - Loss of function is almost always noted in SCLC
- MYC—MYC proteins activate expression of genes that enable proliferation
 - Amplified in about 20% of SCLCs

RB = retinoblastoma; MYC = MYC proto-oncogene.

Sen T, et al. *Transl Lung Cancer Res.* 2018;7:50-68. Sabari JK, et al. *Nat Rev Clin Oncol.* 2017;14:549-561.

9

Evolution of Systemic Therapy in Small-Cell Lung Cancer

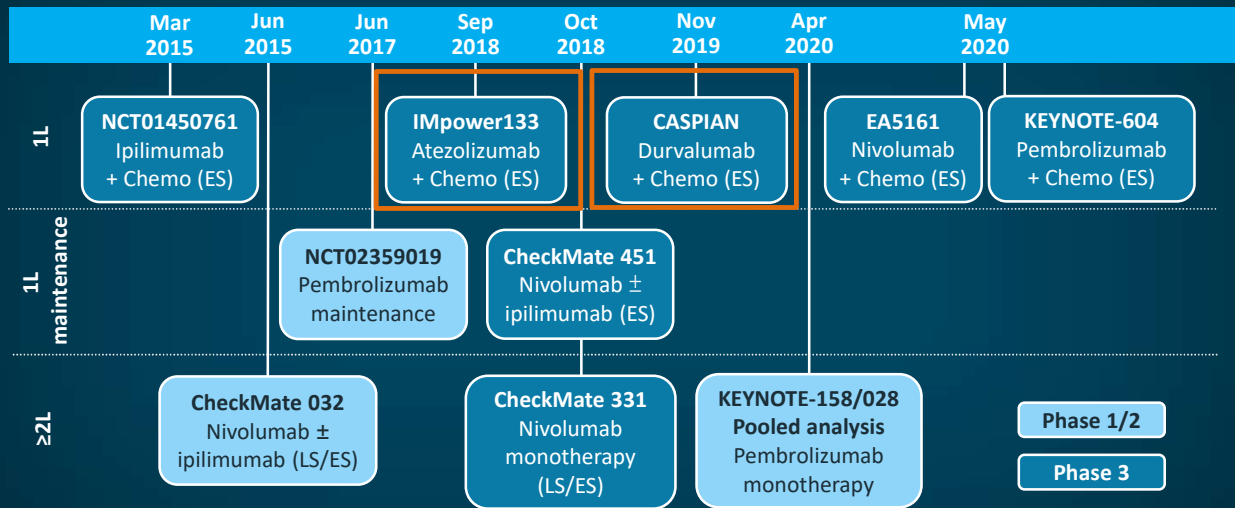


CMV = cytomegalovirus; CAV = cyclophosphamide, doxorubicin, and vincristine; EP = etoposide and cisplatin.

Modified from Sabari JK, et al. *Nat Rev Clin Oncol.* 2017;14:549-561. Saleh K, et al. *Immunotherapy.* 2019;11:457-460.

10

Overview of Key Studies of Immune Checkpoint Inhibitors in SCLC



1L = first line; 2L = second line; Chemo = chemotherapy; ES = extensive stage; LS = limited stage.

11

Efficacy and Safety Review

Second-Line Regimens for Extensive-Stage SCLC

12

What Are the Key Questions in 2L SCLC?

SCLC Subsequent Systemic Therapy	
Relapse ≤6 Months, PS 0–2	
Preferred regimens <ul style="list-style-type: none"> • Topotecan PO or IV • Lurbinectedin • Clinical trial 	
Other recommended regimens <ul style="list-style-type: none"> • Paclitaxel • Docetaxel • Irinotecan • Temozolomide • Cyclophosphamide/doxorubicin/vincristine (CAV) 	<ul style="list-style-type: none"> • Oral etoposide • Vinorelbine • Gemcitabine • Bendamustine (category 2B) • Nivolumab • Pembrolizumab
Relapse >6 Months	
Preferred regimens <ul style="list-style-type: none"> • Original regimen, with omission of checkpoint inhibitor if relapse on IO maintenance 	Other recommended regimens <ul style="list-style-type: none"> • As above

PO = by mouth (oral); IV = intravenous.

National Comprehensive Cancer Network (NCCN) version 1.2022 (https://www.nccn.org/professionals/physician_gls/pdf/sclc.pdf). Accessed 9/24/2021.

13

Current NCCN Guidelines

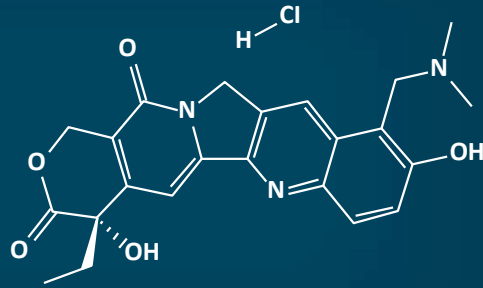
SCLC Subsequent Systemic Therapy	
Relapse ≤6 Months, PS 0–2	
Preferred regimens <ul style="list-style-type: none"> • Topotecan PO or IV • Lurbinectedin • Clinical trial 	
Other recommended regimens <ul style="list-style-type: none"> • Paclitaxel • Docetaxel • Irinotecan • Temozolomide • Cyclophosphamide/doxorubicin/vincristine (CAV) 	<ul style="list-style-type: none"> • Oral etoposide • Vinorelbine • Gemcitabine • Bendamustine (category 2B) • Nivolumab • Pembrolizumab
Relapse >6 Months	
Preferred regimens <ul style="list-style-type: none"> • Original regimen, with omission of checkpoint inhibitor if relapse on IO maintenance 	Other recommended regimens <ul style="list-style-type: none"> • As above

NCCN version 1.2022 (https://www.nccn.org/professionals/physician_gls/pdf/sclc.pdf). Accessed 6/20/2021.

14

Topotecan

- Topoisomerase I inhibitor
- Prevents re-ligation of the cleaved DNA strand, leading to DNA damage and cell death



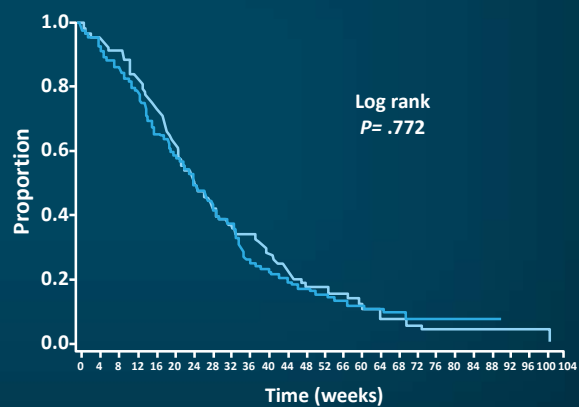
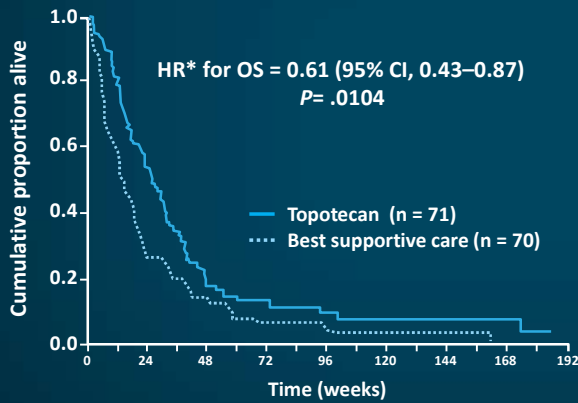
Topotecan hydrochloride

O'Brien MER, et al. *J Clin Oncol*. 2006;24:5441-5447. Topotecan PI, 2019 (www.accessdata.fda.gov/drugsatfda_docs/label/2019/022453s011lbl.pdf). Accessed 6/20/2021.

15

Topotecan Efficacy

- Topotecan 2.3 mg/m²/day PO for days 1–5 every 21 days¹
 - Eligibility include chemotherapy-free interval of at least 45 days after 1L therapy
- Topotecan 1.5 mg/m²/day IV for days 1–5 every 21 days vs CAV²
 - Eligibility included chemotherapy-free interval of at least 60 days after 1L therapy



*adjusted for stratification factors.

HR = hazard ratio; OS = overall survival; CI = confidence interval.

O'Brien MER, et al. *J Clin Oncol*. 2006;24:5441-5447. von Pawel J, et al. *J Clin Oncol*. 1999;17:658-667.

16

Topotecan Toxicities

Hematologic and Nonhematologic Toxicities by Treatment Group

Topotecan 2.3 mg/m²/day PO for days 1–5 every 21 days

Hematologic AEs	Oral Topotecan		IV Topotecan	
	n (%)		n (%)	
	Grade 3	Grade 4	Grade 3	Grade 4
Leukopenia	64 (42.7)	34 (22.7)	74 (49.3)	39 (26.0)
Neutropenia	39 (26.2)	70 (47.0)	35 (23.6)	95 (64.2)
Thrombocytopenia	30 (20.0)	43 (28.7)	38 (25.3)	27 (18.0)
Anemia	28 (17.3)	8 (5.3)	42 (28.0)	4 (2.7)

Non-hematologic AEs	Oral Topotecan		IV Topotecan	
	No. of Patients (%)		No. of Patients (%)	
	Grade 3	Grade 4	Grade 3	Grade 4
Diarrhea	11 (7.2)	1 (0.7)	3 (2.0)	1 (0.7)
Fatigue	10 (6.5)	0 (0.0)	10 (6.6)	2 (1.3)
Dyspnea	9 (5.9)	3 (2.0)	10 (6.6)	5 (3.3)
Anorexia	8 (5.2)	0 (0.0)	3 (2.0)	1 (0.7)
Nausea	6 (3.0)	0 (0.0)	3 (2.0)	1 (0.7)
Asthenia	4 (2.6)	3 (2.0)	7 (4.6)	3 (2.0)
Fever	3 (2.0)	3 (2.0)	4 (2.6)	6 (4.0)

AE = adverse event.

O'Brien MER, et al. *J Clin Oncol*. 2006;24:5441-5441.

17

Topotecan Toxicities

Hematologic and Nonhematologic Toxicities

Topotecan 1.5 mg/m²/d IV for days 1–5 every 21 days

Hematologic Toxicities in 107 Patients				
AE	Patients (N = 107)		Courses (N = 446)	
	AE/No. of Patients (%)		AE/No. of Patients (%)	
	Grade 3	Grade 4	Grade 3	Grade 4
Leukopenia	57/104 (54.8%)	33/104 (31.7%)	196/441 (44.4%)	68/441 (15.4%)
Neutropenia	19/104 (18.3%)	73/104 (70.2%)	137/439 (31.2%)	166/439 (37.8%)
Thrombocytopenia	30/104 (28.8%)	30/104 (28.8%)	83/441 (18.8%)	43/441 (9.8%)
Anemia	41/104 (39.4%)	3/104 (2.9%)	73/440 (16.6%)	5/440 (1.1%)

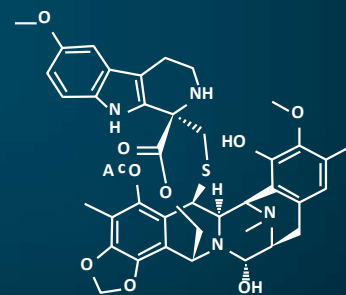
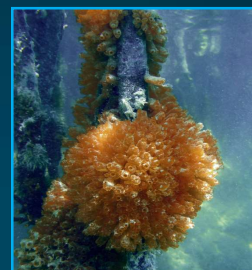
Nonhematologic Toxicities in >10% of 107 Patients			
AE, n (%)	Toxicity criteria grade		Total
	1/2	3/4	
Nausea	38 (35.5%)	4 (3.7%)	42 (39.3%)
Alopecia	38 (35.5%)	0 (0.0%)	38 (35.5%)
Fatigue	23 (21.5%)	5 (4.7%)	28 (26.2%)
Vomiting	24 (22.4%)	2 (1.9%)	26 (24.3%)
Anorexia	19 (17.7%)	1 (0.9%)	20 (18.7%)
Stomatitis	13 (12.2%)	2 (1.8%)	15 (14.0%)
Diarrhea	12 (11.2%)	1 (0.9%)	13 (12.1%)
Fever	11 (10.3%)	2 (1.9%)	13 (12.1%)

von Pawel J, et al. *J Clin Oncol*. 1999;17:658-667.

18

Lurbinectedin

- Synthetically produced agent, originally derived from *Ecteinascidia turbinata* (sea squirt)
- Binds to DNA gene promoters, preventing binding of transcription factors
 - Inhibits oncogenic transcription leading to apoptosis
 - Induces apoptosis of monocytes and tumor associated macrophages in the tumor microenvironment, inhibits cell migration, and limits production of inflammatory mediators (CCL2 and CXCL8) and angiogenic factors (VEGF)
- FDA-approved in adults with metastatic SCLC whose disease progressed on or after platinum-based chemotherapy

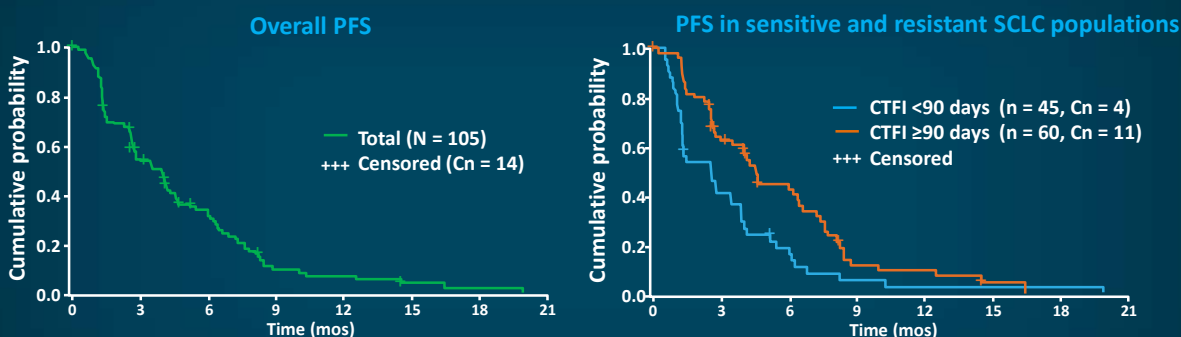


Trigo J, et al. *Lancet Oncol.* 2020;21:645-654. Santamaria Nuñez G, et al. *Mol Cancer Ther.* 2016;15:2399-2412. Cruz C, et al. *J Clin Oncol.* 2018;36:3134-3143. Lurbinectedin (Zepzelca™) PI, 2020 (<https://pp.jazzpharma.com/pi/zepzelca.en.USPI.pdf>). Lurbinectedin. Drug Approvals International (<http://drugapprovalsint.com/lurbinectedin/>). Accessed 6/20/2021.

19

Lurbinectedin Efficacy

- Single-arm phase 2 trial in second-line SCLC
- ORR of 35.2% with stable disease in 33.3% of patients



	Overall (n = 105)	Resistant, CTFI <90 days (n = 45)	Sensitive, CTFI ≥90 days (n = 60)
PFS mos, median, (95% CI)	3.5 (2.6–4.3)	2.6 (1.3–3.9)	4.6 (2.8–6.5)
PFS at 6 mos, %, (95% CI)	32.9 (23.3–42.5)	18.8 (6.8–30.9)	43.5 (30.1–56.9)

ORR = overall/objective response rate; PFS = progression-free survival; Cn = censored number; mo(s) = month(s); CTFI = chemotherapy-free interval.

Trigo J, et al. *Lancet Oncol.* 2020;21:645-654 and supplement. Paz-Ares LG, et al. *J Clin Oncol.* 2019;37(suppl 15): abstract 8506.

20

Lurbinectedin Has Efficacy in SCLC

Outcome	All Patients (N = 105)
ORR, %	35.2
DCR, %	68.6
Median DoR, mos	5.3
Median PFS, mos 6-mo PFS, %	3.5 32.9
Median OS, mos 12-mo OS, %	9.3 34.2

DCR = disease control rate; DoR = duration of response; OS = overall survival.

Trigo J, et al. *Lancet Oncol.* 2020;21:645-654.

21

Lurbinectedin Has Efficacy in Sensitive and Resistant SCLC

Outcome	All Patients (N = 105)	Platinum Sensitive* (n = 60)	Platinum Resistant† (n = 45)
ORR, %	35.2	45.0	22.2
DCR, %	68.6	81.7	51.1
mDoR, mos	5.3	6.2	4.7
mPFS, mos 6-mo PFS, %	3.5 32.9	4.6 43.5	2.6 18.8
mOS, mos 12-mo OS, %	9.3 34.2	11.9 48.3	5.0 15.9

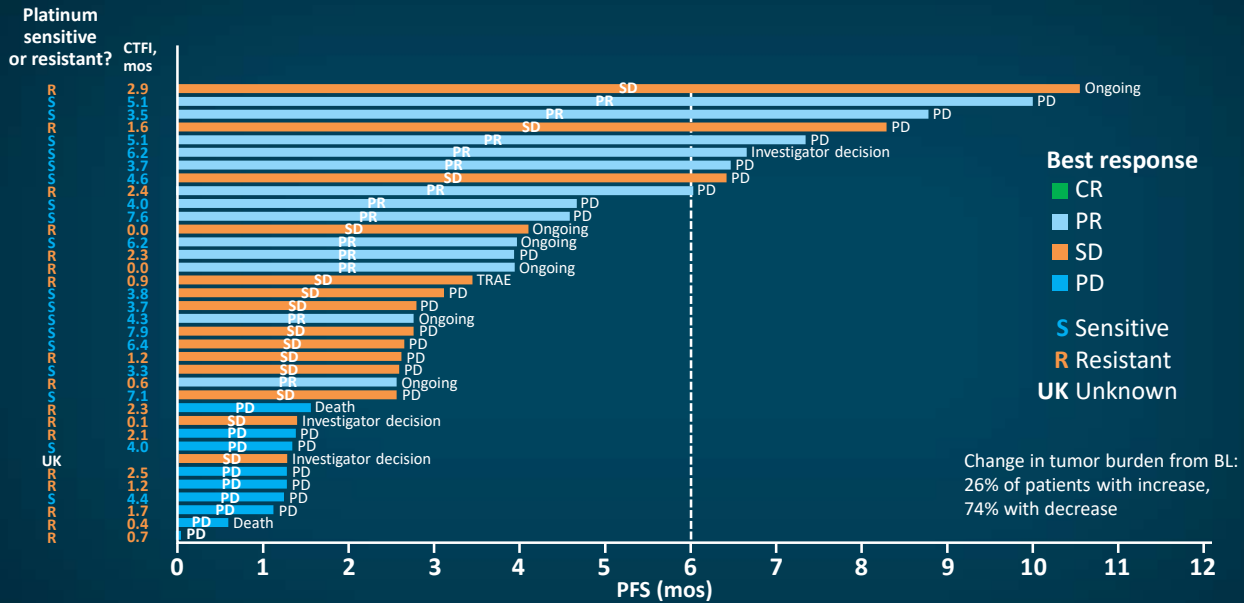
* platinum sensitive = CTFI ≥90 days; † platinum resistant = CTFI <90 days.

mDoR = median DoR; mPFS = median PFS; mOS = median OS.

Trigo J, et al. *Lancet Oncol.* 2020;21:645-654.

22

Lurbinectedin Has Efficacy in Sensitive and Resistant SCLC: Response



CR = complete response; PR = partial response; SC = stable disease; PD = progressive disease.
Trigo J, et al. *Lancet Oncol.* 2020;21:645-654.

23

Efficacy Is Comparable, if Not Superior To Historical Trials

Outcome	Lurbinectedin	Topotecan	Amrubicin
ORR	35.2%	16.9%	31.1%
ORR Sens	45.0%	23.1%	40.9%
ORR Res	22.2%	9.4%	20.1%
Median PFS, mos	3.5	3.5	4.1
Median PFS, Sens, mos	4.6	4.3	5.5
Median PFS, Res, mos	2.6	2.6	2.8
Median OS, mos	9.3	7.8	7.5
Median OS, Sens, mos	11.9	9.9	9.2
Median OS, Res, mos	5.0	6.2	5.7

Sens = sensitive; Res = resistant.

Trigo J, et al. *Lancet Oncol.* 2020;21:645-654. von Pawel J, et al. *J Clin Oncol.* 2014;32:4012-4019.

24

Lurbinectedin Is FDA Approved For SCLC after progression on or after a platinum doublet

- Confirmed ORR of 35.2% with 2L lurbinectedin surpassed $\geq 30\%$ statistical cutoff for a positive trial
 - Follow-up: 17.1 months (IQR: 6.5–25.3),
- Outcomes with 2L lurbinectedin numerically higher than historical outcomes with 2L topotecan
- Results from phase 3 ATLANTIS trial of second-line lurbinectedin plus doxorubicin versus investigator's choice of topotecan or CAV are awaited, however per press communications the primary endpoint of improved OS was not met

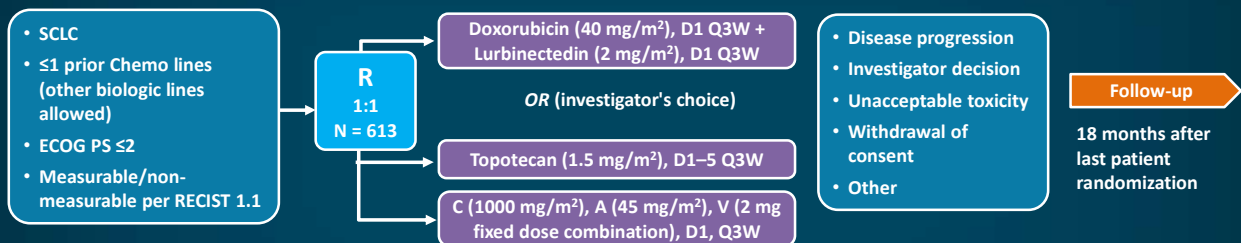
IQR = interquartile range.

Trigo J, et al. *Lancet Oncol.* 2020;21:645-654. Farago AF, et al. *Future Oncol.* 2019;15:231-239.

25

Lurbinectedin + Doxorubicin: ATLANTIS

- Lurbinectedin is an RNA polymerase II inhibitor that targets active transcription
- Has direct cytotoxic effect inducing apoptosis and may impact TME targeting TAM
- Phase 2 study of single-agent lurbinectedin (N = 105): ORR = 35%. mPFS = 3.5 mos, and mOS = 9.3 mos
- Lurbinectedin + doxorubicin has ORR of 92% with mPFS of 5.8 mos in platinum-sensitive SCLC



Primary endpoint: OS*

Key secondary endpoints: PFS, DoR, best tumor response

Stratified by ECOG PS (0 vs 2), CTF1 (≥ 180 , 180–90, <90), CNS involvement (Yes/No), prior PD-L1/PD-1 (Yes/No), investigator's preference for control arm

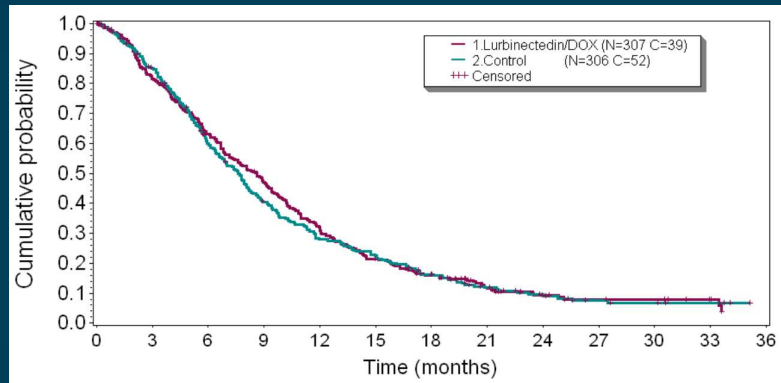
*Study failed to meet its primary endpoint.

RNA = ribonucleic acid; TME = tumor microenvironment; TAM = tumor-associated macrophages; RECIST = Response Evaluation Criteria in Solid Tumors; R = randomization; D = day; Q3W = every 3 weeks; C = cyclophosphamide; A = doxorubicin; V = vincristine; CNS = central nervous system; PD-1 = programmed (cell) death 1; PD-L1 = PD-1 ligand.

Trigo J et al. *Lancet Oncol* 2020;21:645-645. Farago AF, et al *Future Oncol.* 2019;15:231-239. NCT02566993 (<https://clinicaltrials.gov/ct2/show/NCT02566993>). Rosa K. OnLive. 2020 (www.onlive.com/view/lurbinectedin-doxorubicin-combo-misses-os-end-point-in-phase-3-sclc-trial). Accessed 6/20/2021.

26

Overall Survival Equivalent Lurbinectedin/Doxorubicine vs Control



Overall Survival: 8.6 vs 7.6 months
(HR 0.967, 95% CI 0.815-1.148)

Ares P, et al. IASLC 2021 World Conference on Lung Cancer: Abstract PL02.03. Presented September 10, 2021.

27

Managing Adverse Events with Lurbinectedin

- Consider administering premedications for antiemetic prophylaxis
 - Dexamethasone 8 mg IV or equivalent
 - Ondansetron 8 mg IV or equivalent
- Administer lurbinectedin only to patients with baseline neutrophil count >1500 cells/ mm^3 and platelet counts $>100,000/\text{mm}^3$
 - Monitor blood counts prior to each administration
 - G-CSF recommended if neutrophil count <500 cells/ mm^3 or less than lower limit of normal
- Withhold, reduce dose, or permanently discontinue based on severity of hepatotoxicity or myelosuppression
- Lurbinectedin can cause fetal harm; advise use of contraception

G-CSF = granulocyte colony-stimulating factor.

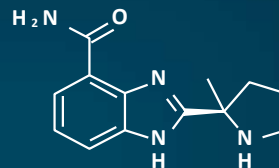
Lurbinectedin (Zepzelca™) PI 2020 (<https://pp.jazzpharma.com/pi/zepzelca.en.USPI.pdf>). Accessed 6/20/2021.

28

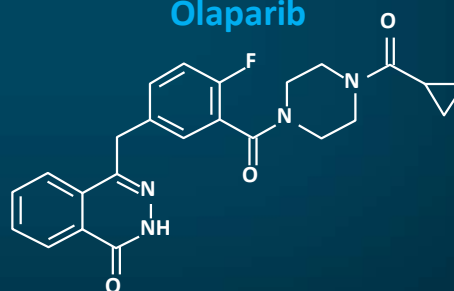
PARP Inhibitors

- Poly-ADP-ribose polymerase (PARP) inhibitors (eg, olaparib and veliparib) prevent repair of single-strand DNA breaks, leading to multiple double-strand DNA breaks
- Trapping of PARP proteins on DNA interferes with replication, causing cell death

Veliparib



Olaparib



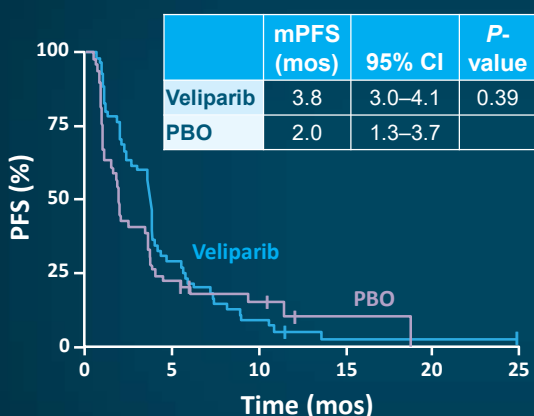
ADP = adenosine diphosphate.

Sen T, et al. *Transl Lung Cancer Res.* 2018;7:50-68. Sabari JK, et al. *Nat Rev Clin Oncol.* 2017;14:549-561.

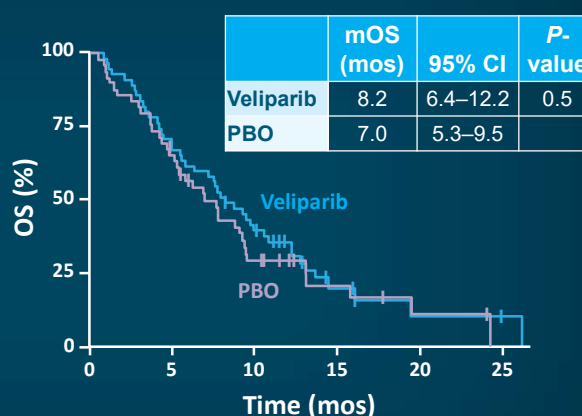
29

Veliparib + Temozolomide for Recurrent ES-SCLC

No significant difference between veliparib + temozolomide and PBO + temozolomide



No. at risk:	0	5	10	15	20	25
Veliparib	55	16	5	1	1	0
Placebo	49	11	6	1	0	0



No. at risk:	0	5	10	15	20	25
Veliparib	55	37	21	6	2	1
Placebo	49	31	13	5	2	0

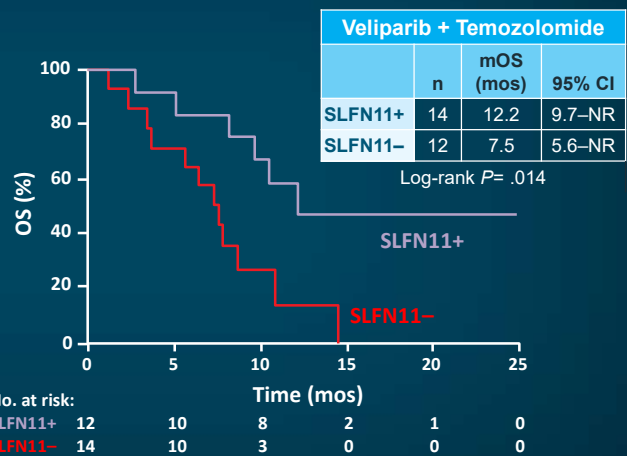
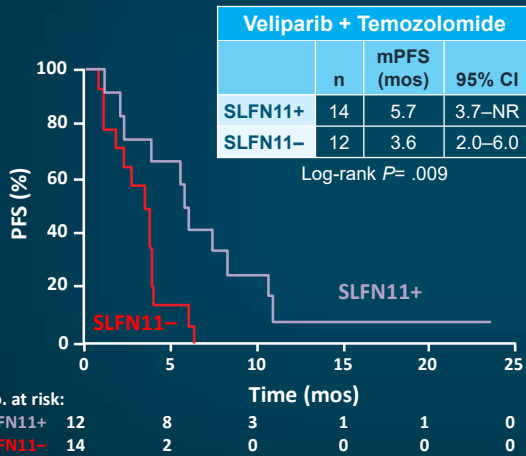
PBO = placebo.

Pietanza MC, et al. *J Clin Oncol.* 2018;36:2386-2394.

30

Veliparib + Temozolomide: Biomarker Analysis

- SLFN11-positive tumors had significantly prolonged PFS and OS
- SLFN11 has potential to serve as a biomarker, but further study is needed



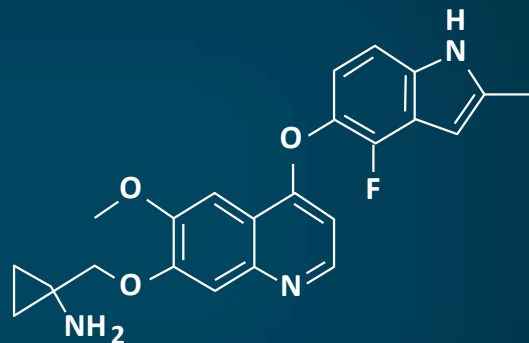
SLN11 = Schlafen-11; NR = not reached.

Pietanza MC, et al. *J Clin Oncol*. 2018;36:2386-2394.

31

Anlotinib

- Multi-targeted tyrosine kinase inhibitor
- Selective inhibitor of VEGFR-1, VEGFR-2, VEGFR-3, PDGFR, cKIT
 - Receptors mediate proangiogenic pathways and tumor proliferation
- Randomized trial: anlotinib vs placebo in 3rd-line small-cell lung cancer



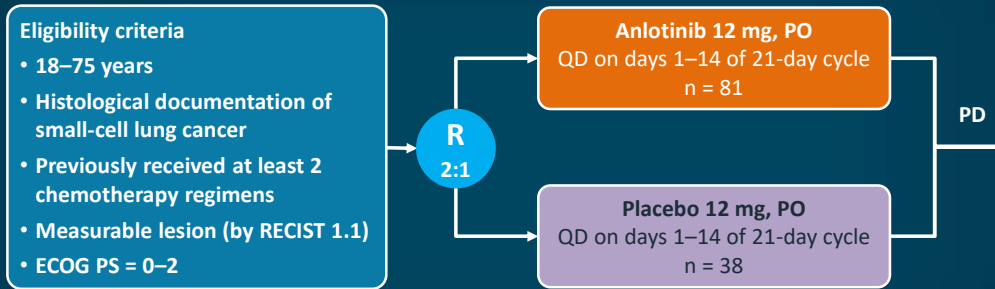
VEGFR = vascular endothelial growth factor receptor; PDGFR= platelet-derived growth factor receptor, KIT = stem cell factor receptor.

Si X, et al. *Thorac Cancer*. 2019;10:551-556. Zhao Y, Adjei AA. *Oncologist*. 2015;20:660-673.

32

Antiangiogenic Agents: Anlotinib in Relapsed SCLC (ALTER1202)

- VEGF plays a central role in angiogenesis, and high VEGF levels are poor prognosis in SCLC
- Anlotinib is multi-kinase inhibitor with activity at VEGFR 2-3, FGFR1-4, PDGF a/B and c-kit



Primary endpoint: PFS

Secondary endpoint: OS, ORR, DCR, quality of life, safety/tolerability

Stratification: stage (limited vs extensive, relapse (sensitive vs refractory))

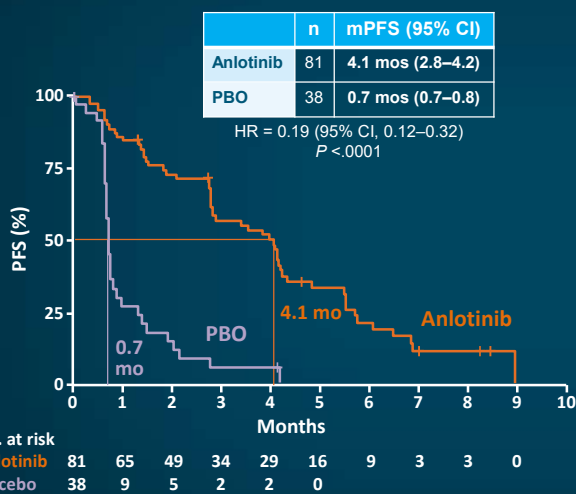
QD = once daily, every day.

Cheng Y, et al. *Ann Oncol.* 2019;30(suppl 5):v711 (abstract 17380). Si X, et al. *Thorac Cancer.* 2019;10:551-556.

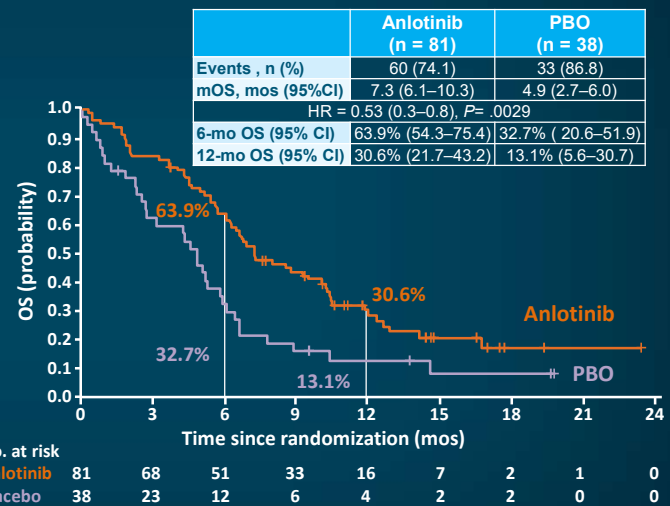
33

Antiangiogenic Agents: Anlotinib in Relapsed SCLC (ALTER1202)

Progression-free survival



Overall survival

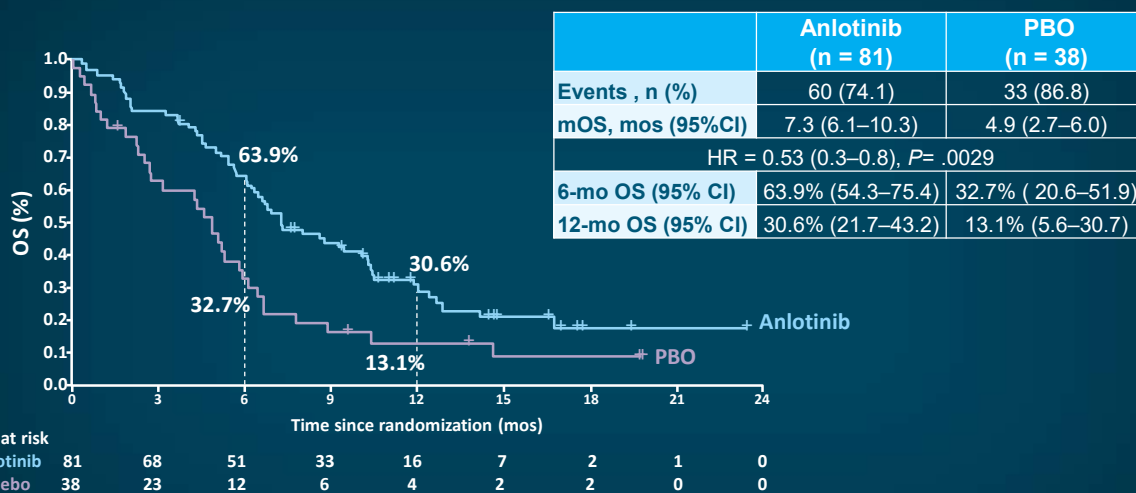


ORR = 4.9% vs 2.6%, DCR = 71.6% vs 13.2%

Cheng Y, et al. *Ann Oncol.* 2019;30(suppl 5):v711 (abstract 17380).

34

Anlotinib vs Placebo



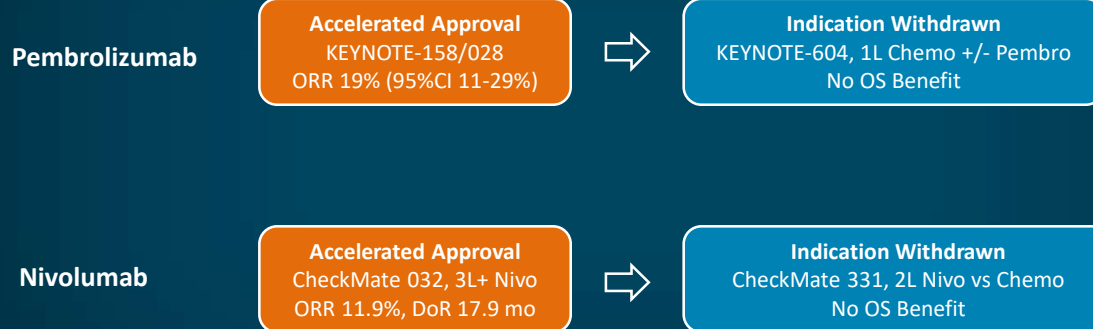
Grade 3 adverse events include hypertension and hyponatremia

Cheng Y, et al. *Ann Oncol.* 2019;30(suppl 5):v711 (abstract 17380).

35

Checkpoint Inhibitors for 2L+ in NSCLC

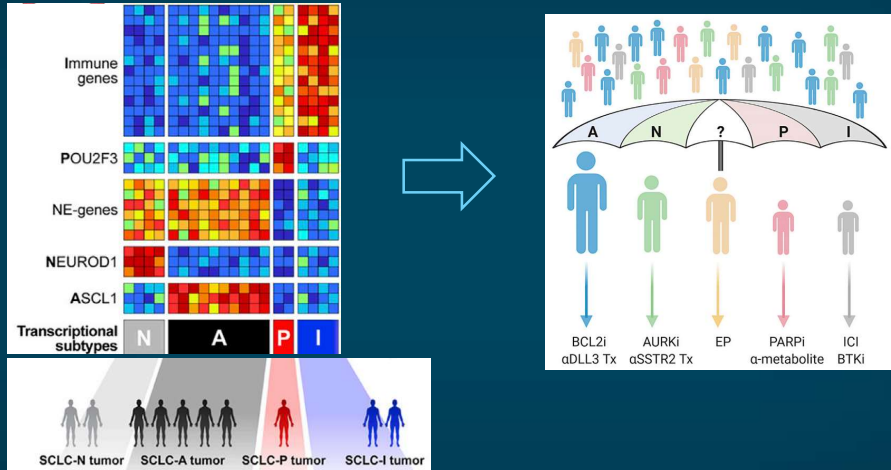
FDA Approvals Withdrawn for Pembrolizumab and Nivolumab



Rudin CM, et al. *J Clin Oncol.* 2020;38(21):2369-2379. Ready N, et al. *J Thorac Oncol.* 2019;14(2):237-44. Spigel DR, et al. *Ann Oncol.* 2021;32(5):631-641.

36

Will Molecular Profiling Guide SCLC Treatment in the Future?



Gay CM, et al. *Cancer Cell*. 2021;39(3):346-360. Frese KK, et al. *Cancer Cell*. 2021;39:297-299

37

Applying National Cancer Center Network Guidelines to Practice

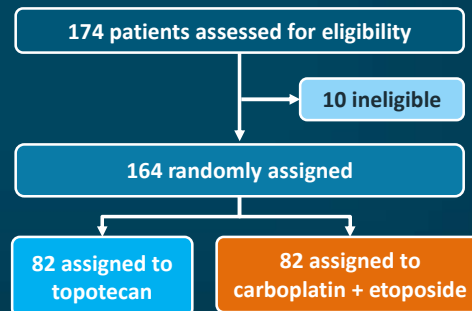
38

Role of Platinum Re-exposure?

- For platinum-sensitive disease, usual practice is to rechallenge with first-line platinum-based treatment
- However, this practice relies on studies older than 20 years with small sample sizes
- Two strategies are available for second-line treatment: rechallenge with the initial chemotherapy or treatment with topotecan

Carboplatin plus etoposide versus topotecan as second-line treatment for patients with sensitive relapsed small-cell lung cancer: an open-label, multicentre, randomised, phase 3 trial

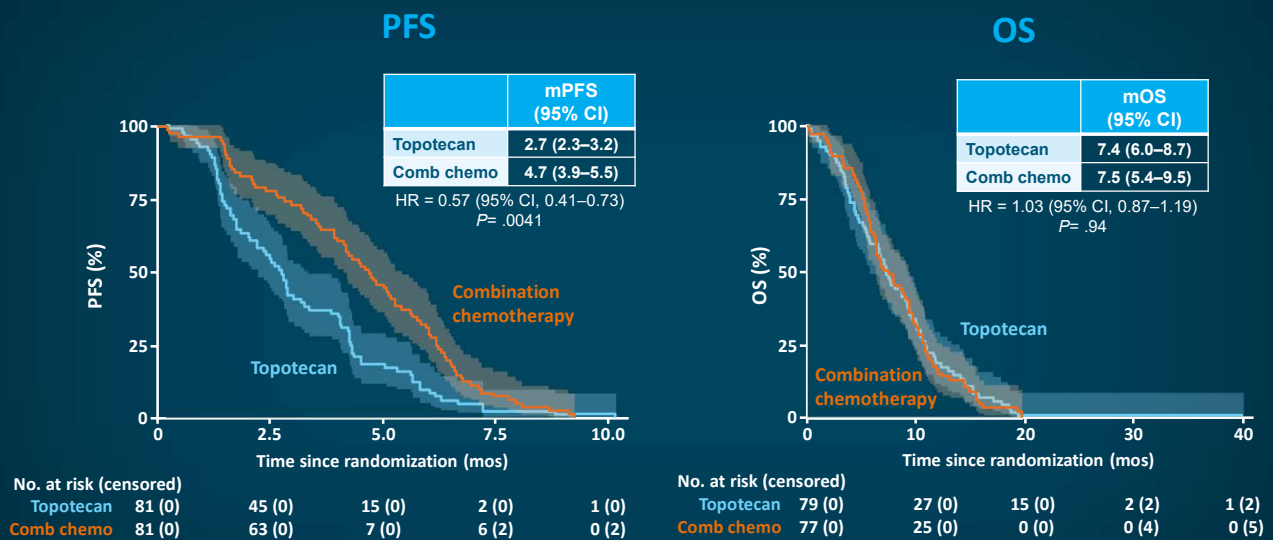
Nathalie Baize, Isabelle Monnet, Laurent Greillier, Margaux Geier, Hervé Lena, Henri Janicot, Alain Vergnenegre, Jacky Crequit, Regine Lamy, Jean-Bernard Auliac, Jacques Letreut, Hervé Le Caer, Radj Gervais, Eric Dansin, Anne Madroszyk, Patrick-Aldo Renault, Gwenaëlle Le Garff, Lionel Falchero, Henri Berard, Roland Schott, Patrick Saulnier, Christos Chouaid, on behalf of the Groupe Français de Pneumo-Cancérologie 01-13 investigators*



Baize N, et al. *Lancet Oncol.* 2020;21:1224-1233.

39

Improved PFS with Platinum Re-exposure

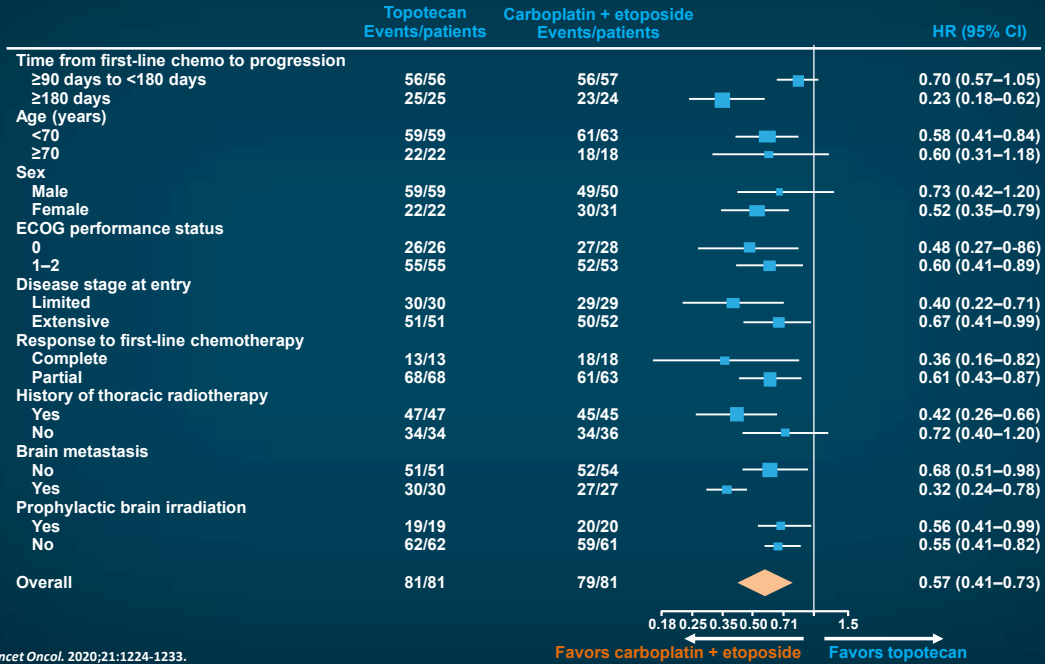


Comb chemo = combination chemotherapy (carboplatin + etoposide).

Baize N, et al. *Lancet Oncol.* 2020;21:1224-1233.

40

Improved PFS with Platinum Re-Exposure



Baize N, et al. *Lancet Oncol.* 2020;21:1224-1233.

41

Case Study

Extensive-stage SCLC Treated With Lurbinectedin

42

A 67-year-old Woman With Extensive-stage SCLC...

Clinical Presentation

- Multifocal disease involving the lungs, mediastinal LNs, bones, and brain

Clinical Course

- 4 cycles carboplatin/etoposide/atezolizumab
- Whole brain radiation
- Atezolizumab maintenance

3-month Follow-up

- CT scans
 - Multifocal disease progression with new hepatic lesions
 - Progressive pulmonary involvement
- No new CNS disease

43

A 67-year-old Woman With Extensive-stage SCLC...

Continued Follow-up

- They began on lurbinectedin therapy five months ago with partial response to therapy
- However, most recent CT scans demonstrate disease progression
- No new CNS lesions
- ECOG PS 1

What treatment option would you recommend for this patient?

44

Case Study

Young, Non-smoker

45

A 45-Year-Old Man: Non-smoker but With Occupational Exposures...

Clinical Presentation

- Shortness of breath, cough, and a weight loss of 25 lbs over the last 6 months

Imaging

- CT scan revealed a 4.5 x 3.5 cm hilar mass in the right lung with enlarged mediastinal lymph nodes

Diagnosis and Clinical Course

- Diagnosed with SCLC
- Received 4 cycles of cisplatin and etoposide
- Concurrent thoracic radiation of 44 Gy

46

A 45-Year-Old Man: Non-smoker but With Occupational Exposures (continued)...

3-month Follow-up

- CT scan showed several small lung nodules and enlarged right mandibular and right axillary lymph nodes
- Biopsies revealed metastasis of SCLC
- Brain MRI is negative for metastases

What treatment options would you recommend for this patient?

47

A 45-Year-Old Man Who is a Non-smoker but With Occupational Exposures (continued)...

Which treatment option would you recommend to this patient?

- SCLC is unusual in a young non-smoking patient, consider genomic testing and/or academic review of pathology findings
- Both lurbinectedin and topotecan are FDA-approved in the second-line setting. Lurbinectedin may be preferred due to toxicity profile

48

Case Study

Multifocal, Systemic, SCLC Relapse

49

A 57-Year-Old Man Previously Diagnosed With SCLC...

History of Disease

- First diagnosed with SCLC in December 2018
- Treated with 6 cycles of cisplatin and etoposide
- Concurrent 70 Gy radiation with the first 2 chemotherapy cycles
- Began to experience dyspnea and hemoptysis 3 months after therapy completion
- Imaging and biopsy confirm multifocal systemic SCLC relapse, without CNS involvement
- He began treatment with lurbinectedin 3.2 mg/m²

50

A 57-Year-Old Man Previously Diagnosed With SCLC (continued)...

Cycle 2, Day 1 Appointment

- Absolute neutrophil count is 1,200 cells/mm³
- He is not experiencing fever

What is the best course of action?

51

Lurbinectedin Dose Adjustments

Neutropenia

ANC <500/mm³ or febrile neutropenia → Hold to ANC >1500/mm³ and dose reduce

- Option to add GCSF and defer dose reduction if isolated ANC <500/m³
- GCSF recommended if any ANC < LLN

Thrombocytopenia

Platelets 25-50K/mm³ +bleeding or < 25K/mm³ → Hold until 100K/mm³ and dose reduce

Lurbinectedin. Package insert. Jazz Pharmaceuticals, Inc.; 2020. [https://www.accessdata.fda.gov/drugsatfda_docs/label/2020/213702s000lbl.pdf]

52

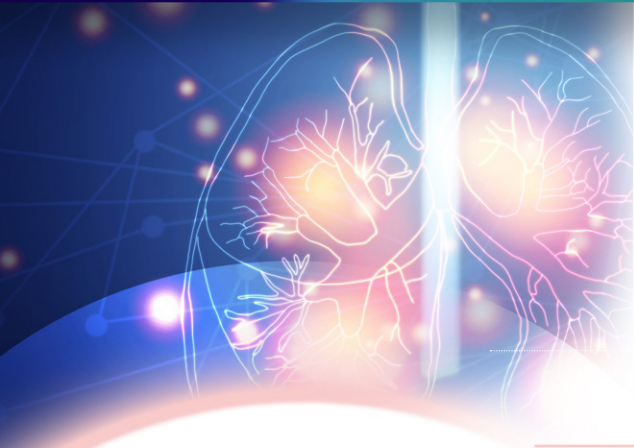
Build your own complimentary poster for the office!



Supplement your Course Learning. It's fast and easy.



We'll ship it to you directly free of charge



Leveraging Novel Treatment Options for **SMALL-CELL LUNG CANCER** in the Second Line

PLEASE VISIT sclc.posterprogram.com

Response to primary therapy and tumorigenesis of small-cell lung cancer: subsequent lines of therapy and pathophysiology primer

Resource	Address
Büttner R, et al. Implementing TMB measurement in clinical practice: considerations on assay requirements. <i>ESMO Open</i> . 2019;4:e000442.	www.ncbi.nlm.nih.gov/pmc/articles/PMC6350758/pdf/esmooopen-2018-000442.pdf
George J, et al. Comprehensive genomic profiles of small cell lung cancer. <i>Nature</i> . 2015;524:47-53.	https://pubmed.ncbi.nlm.nih.gov/26168399/
Misch D, et al. Value of thyroid transcription factor (TTF)-1 for diagnosis and prognosis of patients with locally advanced or metastatic small cell lung cancer. <i>Diagn Pathol</i> . 2015;10:21.	https://diagnosticpathology.biomedcentral.com/track/pdf/10.1186/s13000-015-0250-z.pdf
Sabari JK, et al. Unravelling the biology of SCLC: implications for therapy. <i>Nat Rev Clin Oncol</i> . 2017;14:549-561.	https://pubmed.ncbi.nlm.nih.gov/28534531/
Sen T, Gay CM, Byers LA. Targeting DNA damage repair in small cell lung cancer and the biomarker landscape. <i>Transl Lung Cancer Res</i> . 2018;7:50-68.	https://tlcr.amegroups.com/article/view/19133/15089

Efficacy and safety review

Resource	Address
Cruz C, et al. Multicenter phase II study of lurbinectedin in BRCA-mutated and unselected metastatic advanced breast cancer and biomarker assessment substudy. <i>J Clin Oncol</i> . 2018;36:3134-3143.	https://ascopubs.org/doi/pdf/10.1200/JCO.2018.78.6558
Farago AF, et al. ATLANTIS: a phase III study of lurbinectedin/doxorubicin versus topotecan or cyclophosphamide/doxorubicin/vincristine in patients with small-cell lung cancer who have failed one prior platinum-containing line. <i>Future Oncol</i> . 2019;15:231-239.	https://pubmed.ncbi.nlm.nih.gov/30362375/

<p>Santamaria Nuñez G, et al. Lurbinectedin specifically triggers the degradation of phosphorylated RNA polymerase II and the formation of DNA breaks in cancer cells. <i>Mol Cancer Ther.</i> 2016;15:2399-2412.</p>	<p>https://pubmed.ncbi.nlm.nih.gov/27630271/</p>
<p>O'Brien MER, et al. Phase III trial comparing supportive care alone with supportive care with oral topotecan in patients with relapsed small-cell lung cancer. <i>J Clin Oncol.</i> 2006;24:5441-5447.</p>	<p>https://mct.aacrjournals.org/content/15/10/2399.full-text.pdf</p>
<p>Paz-Ares LG, et al. Efficacy and safety profile of lurbinectedin in second-line SCLC patients: results from a phase II single-agent trial. <i>J Clin Oncol.</i> 2019;37(suppl 15): abstract 8506.</p>	<p>https://ascopubs.org/doi/abs/10.1200/JCO.2019.37.15_suppl.8506</p>
<p>Pietanza MC, et al. Randomized, double-blind, phase II study of temozolomide in combination with either veliparib or placebo in patients with relapsed-sensitive or refractory small-cell lung cancer. <i>J Clin Oncol.</i> 2018;36:2386-2394.</p>	<p>https://ascopubs.org/doi/pdf/10.1200/JCO.2018.77.7672</p>
<p>Sabari JK, et al. Unravelling the biology of SCLC: implications for therapy. <i>Nat Rev Clin Oncol.</i> 2017;14:549-561.</p>	<p>https://pubmed.ncbi.nlm.nih.gov/28534531/</p>
<p>Sen T, Gay CM, Byers LA. Targeting DNA damage repair in small cell lung cancer and the biomarker landscape. <i>Transl Lung Cancer Res.</i> 2018;7:50-68.</p>	<p>https://tlcr.amegroups.com/article/view/19133/15089</p>
<p>Si X, et al. Management of anlotinib-related adverse events in patients with advanced non-small cell lung cancer: experiences in ALTER-0303. <i>Thorac Cancer.</i> 2019;10:551-556.</p>	<p>www.ncbi.nlm.nih.gov/pmc/articles/PMC6397894/</p>
<p>Trigo J, et al. Lurbinectedin as second-line treatment for patients with small-cell lung cancer: a single-arm, open-label, phase 2 basket trial. <i>Lancet Oncol.</i> 2020;21:645-654.</p>	<p>https://pubmed.ncbi.nlm.nih.gov/32224306/</p>
<p>von Pawel J, et al. Randomized phase III trial of amrubicin versus topotecan as second-line treatment for patients with small-cell</p>	<p>https://ascopubs.org/doi/pdf/10.1200/JCO.2013.54.5392</p>

lung cancer. <i>J Clin Oncol.</i> 2014;32:4012-4019.	
von Pawel J, et al. Topotecan versus cyclophosphamide, doxorubicin, and vincristine for the treatment of recurrent small-cell lung cancer. <i>J Clin Oncol.</i> 1999;17:658-667.	https://pubmed.ncbi.nlm.nih.gov/10080612/

Applying National Cancer Center Network guidelines to practice

Resource	Address
Baize N, et al. Carboplatin plus etoposide versus topotecan as second-line treatment for patients with sensitive relapsed small-cell lung cancer: an open-label, multicentre, randomised, phase 3 trial. <i>Lancet Oncol.</i> 2020;21:1224-1233.	https://pubmed.ncbi.nlm.nih.gov/32888454/